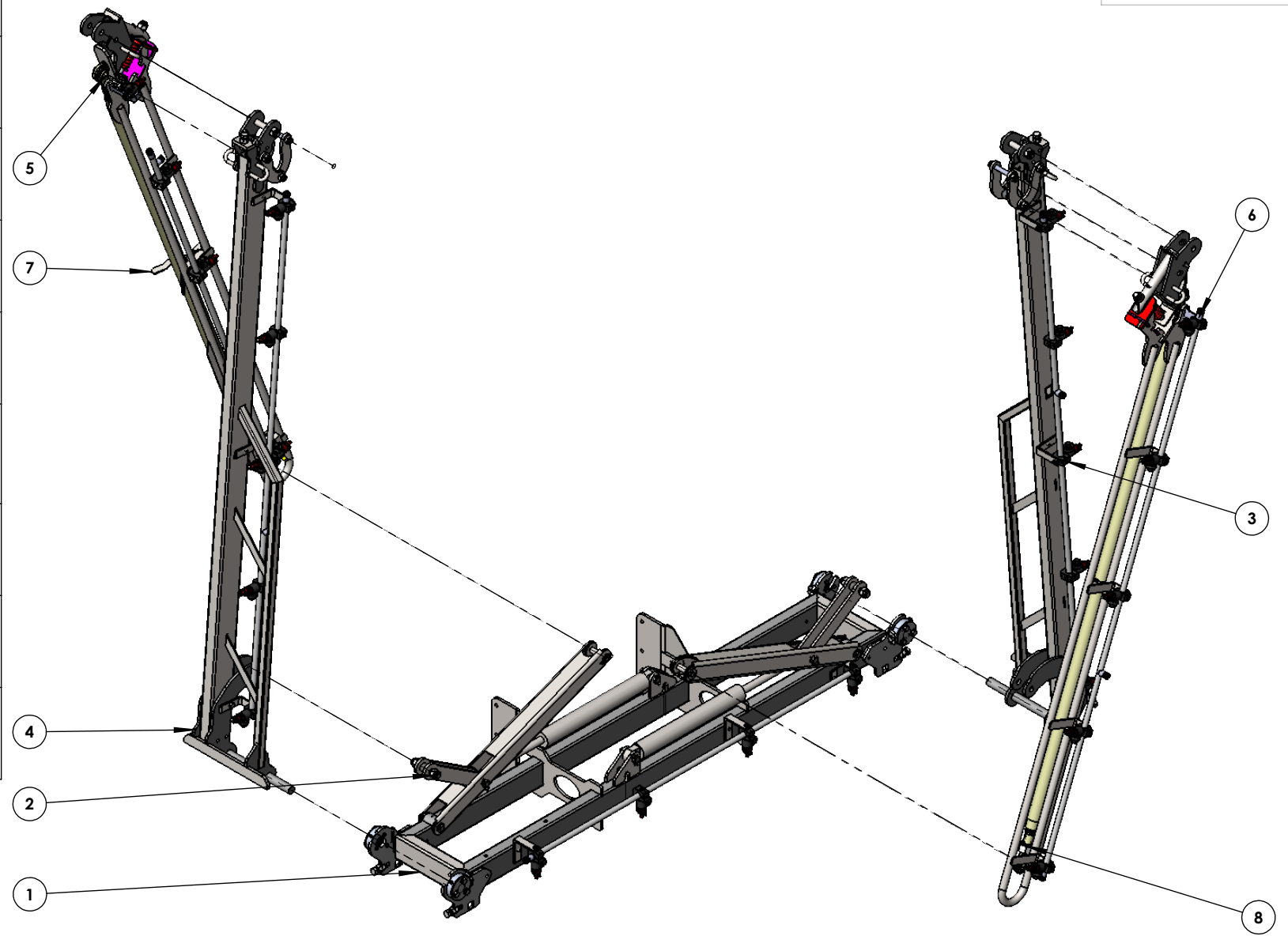
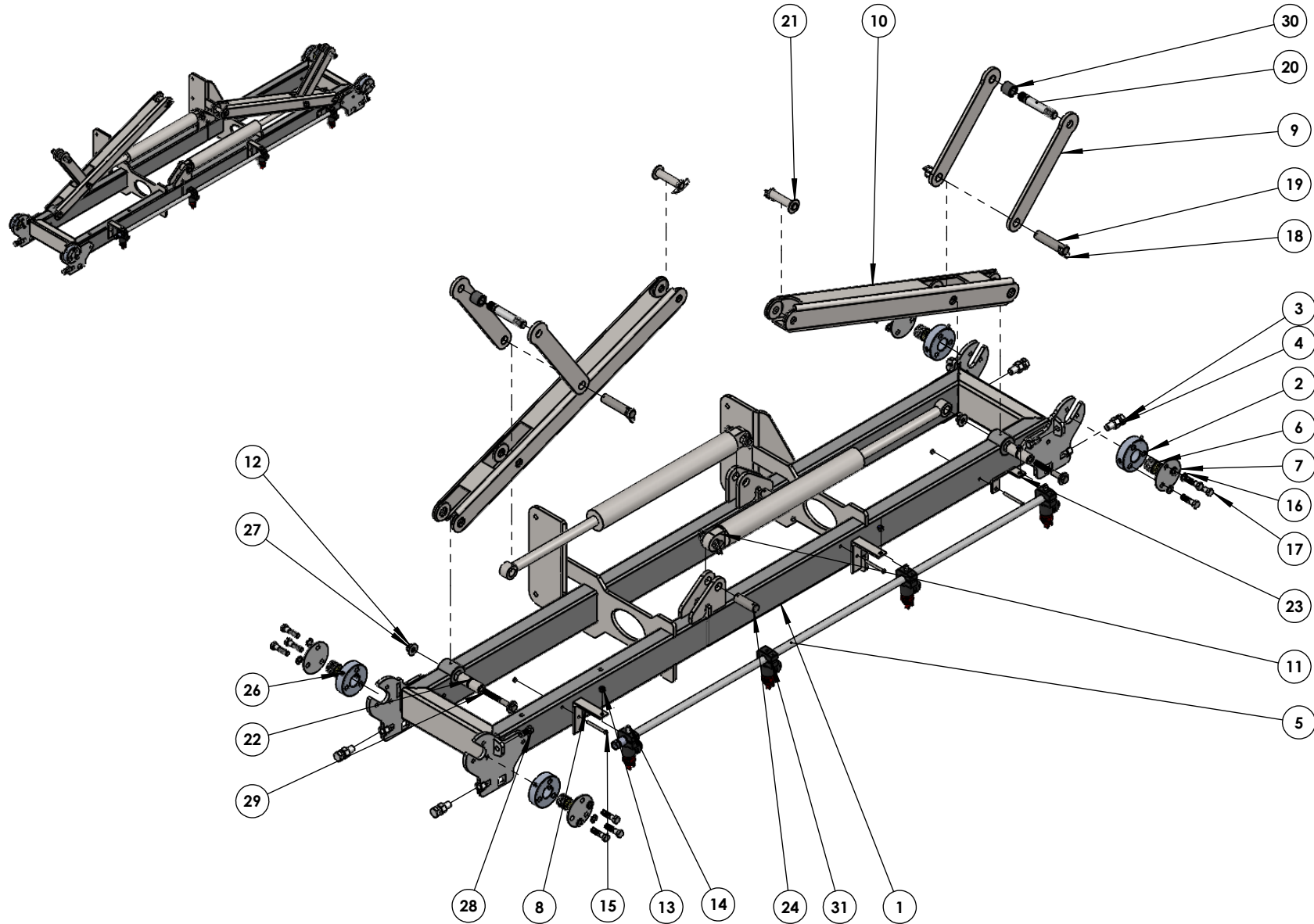


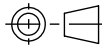

ITEM NO.	PART NUMBER	QTY.
1	Centre section Full assm	1
2	1138-NYLOC M20 NUT ZP	4
3	Inner arm Full RH assm	1
4	Inner arm Full LH assm	1
5	97123-08G-Top link assm cat 1	2
6	Outer arm Full RH assm 1	1
7	Outer arm Full LH assm 1G	1
8	4438-NUT M27 X 3.0 GALV	2

SURFACE FINISH
ERROR!:Finish



	WEIGHT(kg)	189.13		SCALE: 1:20	MATERIAL: ERROR!:Material
	Qty: ERROR!:Qty	1			TITLE: 97123-00 Gen3 -Main assembly
<small>CONFIDENTIAL © COPYRIGHT: Copyright in this drawing resides in BA Pumps & Sprayers. Unauthorised use may result in legal action. The subject of this drawing may be protected by pending patent and design applications or granted patent and design registrations. Unauthorised construction of the product may infringe copyright.</small>		<small>DRAWN: ERROR!:DrawnDate</small>	<small>DRAWING Standard: AS1100</small>	<small>DWG NO. ERROR!:Drawing Number</small>	<small>REV: A A4</small>
				PROJECT: ERROR!:Project	SHEET 1 OF 1

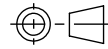



Qty:	WEIGHT(kg)	83.66	 SCALE: 1:15 SolidWorks	MATERIAL:	ERROR!Material	
	TOLERANCE: LINEAR: +/- ANGULAR: +/- °			TITLE:	Centre section Full assm	
 CONFIDENTIAL © COPYRIGHT: Copyright in this drawing resides in BA Pumps & Sprayers. Unauthorised use may result in legal action. The subject of this drawing may be protected by pending patent and design applications or granted patent and design registrations. Unauthorised construction of the product may infringe copyright.	DRAWN		Drawing Standard: AS1100	DWG NO.		
					PROJECT:	
					REV: A	A4
					SHEET 1 OF 2	

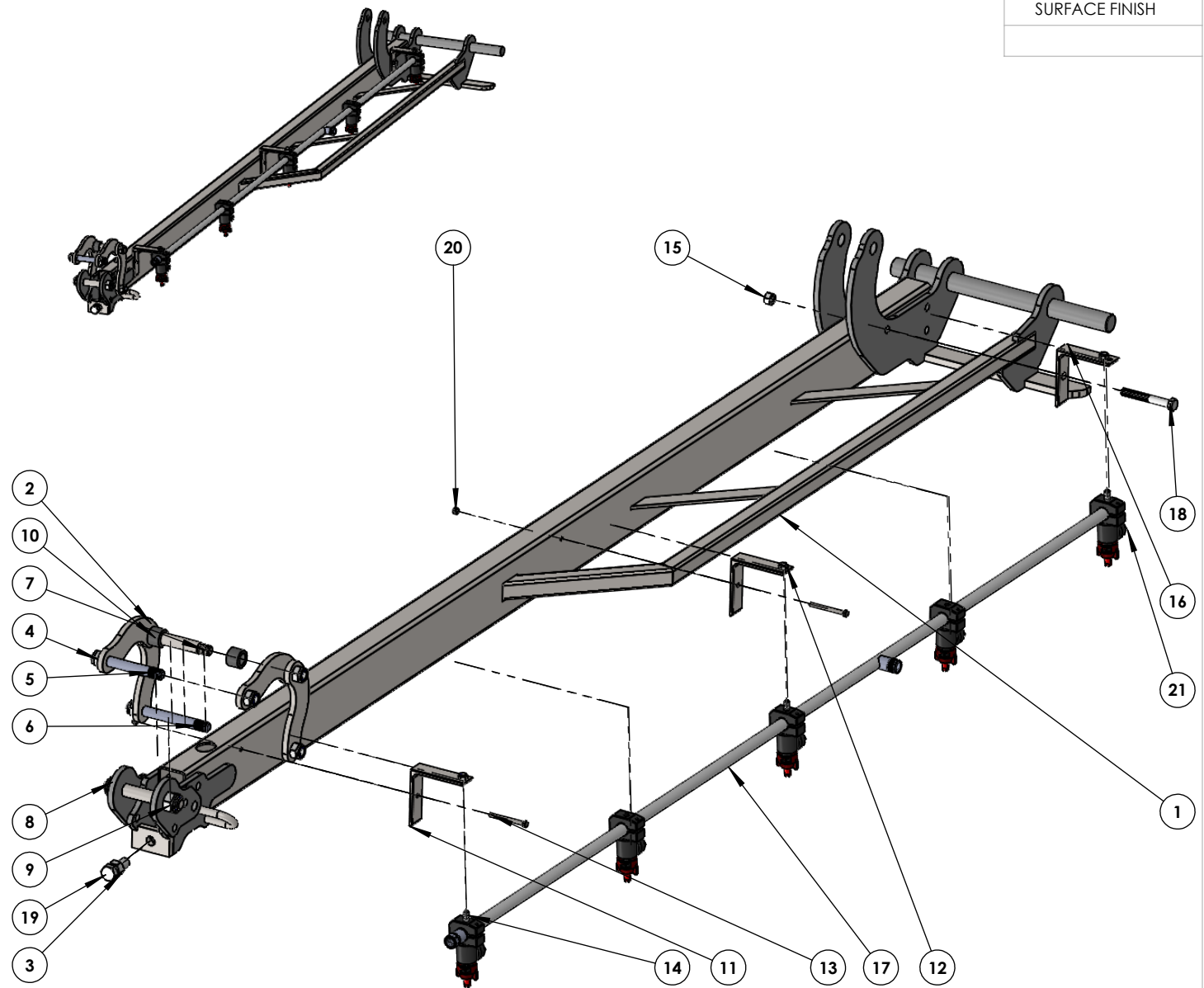
ITEM NO.	PART NUMBER	QTY.
1	97123-77-Center section assm Gen3	1
2	97070-20-Bearing housing	4
3	2348-BOLT M16 X 45 ZP HT	4
4	1973-NUT M16 (NHFSM16Z)	4
5	97006-16	1
6	4229 BUSH SPLIT 30 X 34 X 25	4
7	97070-19-Bearing cap	4
8	97123-48-Boom tube support 1	2
9	97123-52G-Mid link profile-LC	4
10	97123-07G-Inner link arm assm	2
11	19887.1 ASSM	2
12	1116-NUT M12 NYLOC ZP	2
13	1114-NUT M8 NYLOC ZP	3
14	2214-BOLT M8X20 ZP HT	3
15	1728-BOLT ZP M6X65	3
16	1120-WASHER SPRING M12 ZP	12
17	1104-BOLT M12X45 & NUT ZP HT	12
18	4031 Rue clip	10
19	97042-01-hydraulic lift pin	2
20	AM A M20X100-S	2
21	97123-88-Top link pin	2

ITEM NO.	PART NUMBER	QTY.
22	97123-75-Inner link arm pin	2
23	97123-63-Ctr section RH boom mt	1
24	97023-15-Cyl clevis pin	2
25	1113-NUT M6 NYLOC ZP	3
26	1158 M6 Grease nipple	4
27	4434-WASHER M12 X 32 ZP	4
28	2448-BOLT M12 X 30	4
29	2107-BOLT M12 X 100 ZP HT	2
30	97123-56-Spacer bush 1	2
31	QJ17560A-20mm-N NOZZLE BODY 20MM	4

SURFACE FINISH

Qty:	WEIGHT(kg) 83.66	 SCALE: 1:20 SolidWorks	MATERIAL: ERROR!Material
	TOLERANCE: LINEAR: +/- ANGULAR: +/- °		TITLE: Centre section Full assm
	DRAWN	Drawing Standard: AS1100	DWG NO.
	CONFIDENTIAL © COPYRIGHT: Copyright in this drawing resides in BA Pumps & Sprayers. Unauthorised use may result in legal action. The subject of this drawing may be protected by pending patent and design applications or granted patent and design registrations. Unauthorised construction of the product may infringe copyright.		REV: A A4 PROJECT: SHEET 2 OF 2

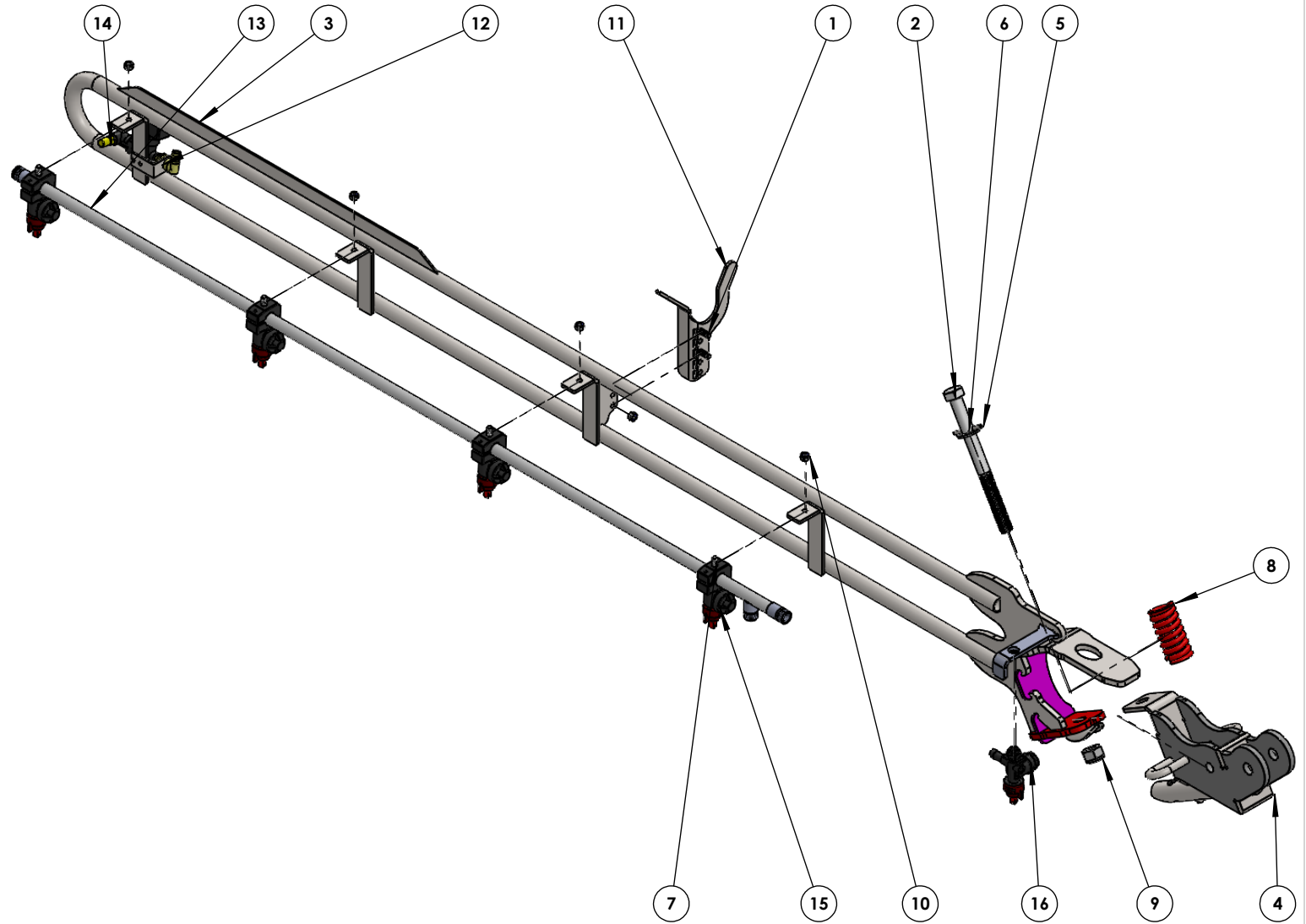
ITEM NO.	PART NUMBER	QTY.
1	97123-03 G2 Inner arm assm	1
2	97123-96-Clevis link new	4
3	1973-NUT M16 (NHFSM16Z)	1
4	1160-NYLOC M16 NUT ZP	6
5	97072-09 STUD M16 X 131mm (EGALV)	1
6	97123-58-Stud M16 x 151	1
7	97123-60-Stud 19.05 dia x M16 x 151	1
8	1138-NYLOC M20 NUT ZP	2
9	97123-59-Stud M20 x 140	1
10	97123-57-Spacer bush 2	2
11	97123-48-Boom tube support 1	2
12	1114-NUT M8 NYLOC ZP	3
13	1728-BOLT ZP M6X65	2
14	2214-BOLT M8X20 ZP HT	3
15	4142 M12 NUT ZP	1
16	97123-49-Boom tube support 2	1
17	97123-100-Arm boom tube assm	1
18	2175-BOLT M12X90 ZP HT BN	1
19	2348-BOLT M16 X 45 ZP HT	1
20	1113-NUT M6 NYLOC ZP	2
21	QJ17560A-20mm-N NOZZLE BODY 20MM	5





SURFACE FINISH

Qty:	WEIGHT(kg)	28.79		SCALE: 1:10	MATERIAL: ERROR!Material
	TOLERANCE: LINEAR: +/- ANGULAR: +/- *			SolidWorks	TITLE: Inner arm Full LH assm
	DRAWN		Drawing Standard: AS1100	DWG NO.	REV: A A4
	CONFIDENTIAL © COPYRIGHT: Copyright in this drawing resides in BA Pumps & Sprayers. Unauthorised use may result in legal action. The subject of this drawing may be protected by pending patent and design applications or granted patent and design registrations. Unauthorised construction of the product may infringe copyright.			PROJECT:	SHEET 1 OF 1

ITEM NO.	PART NUMBER	QTY.
1	1090-BOLT M8X25 ZP HT	2
2	97123-38-Brk away bolt	1
3	97123-05G2-Outer arm LH assm	1
4	97123-04-G2 Brake away assm	1
5	3009-ROLL PIN M6 X 50 SS	1
6	2581-WASHER M20 HEAVY GALV	1
7	2214-BOLT M8X20 ZP HT	4
8	1609 Spring squashed to 90 long	1
9	1138-NYLOC M20 NUT ZP	1
10	1114-NUT M8 NYLOC ZP	6
11	97123-76-Outer arm latch	1
12	97123-87-Fence line bracket	1
13	97123-99-Left outer arm boom tube assm	1
14	K3 Fence line kit	1
15	QJ17560A-20mm-N NOZZLE BODY 20MM	4
16	QJ39685-1L-500N	1

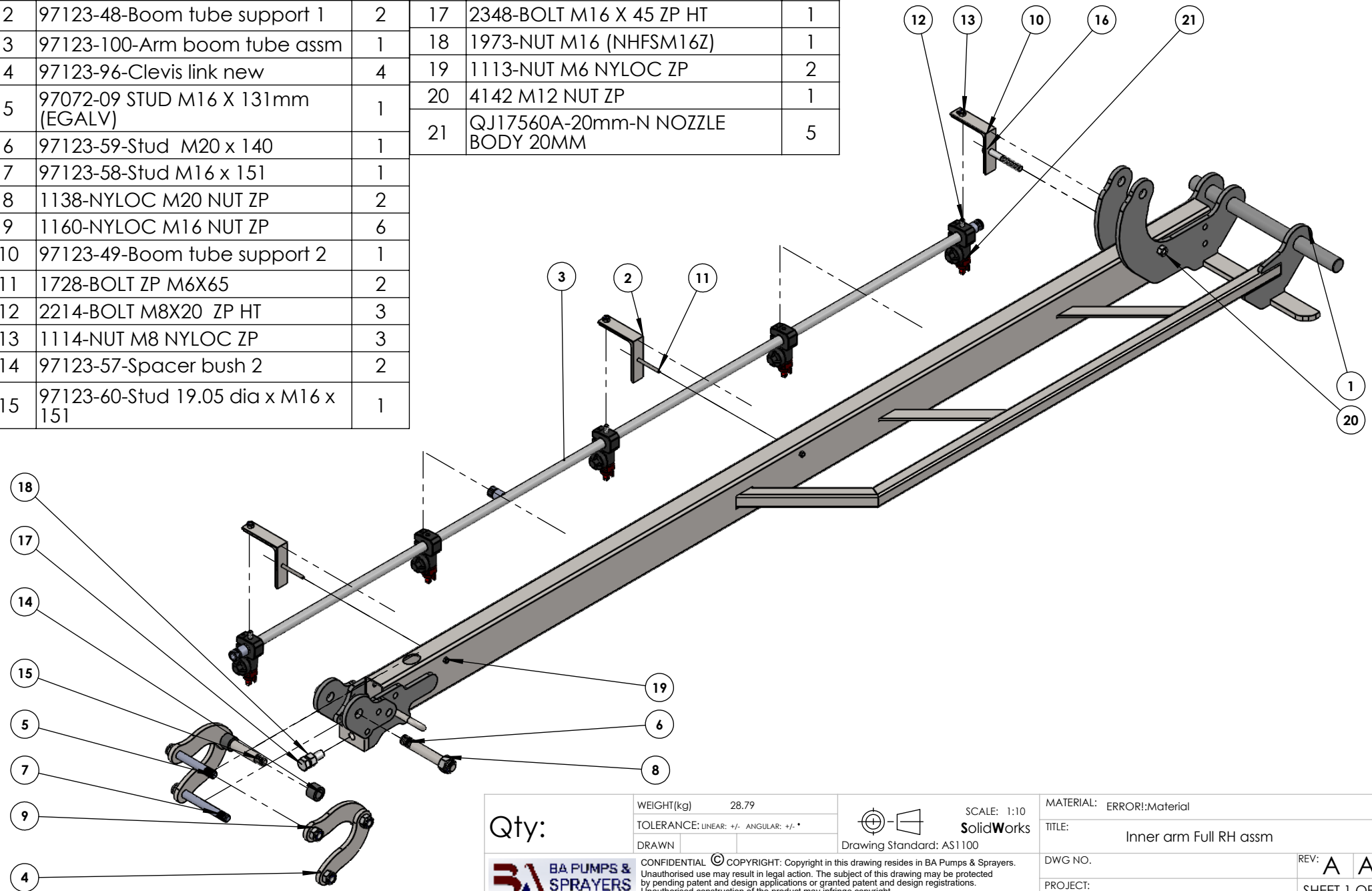


SURFACE FINISH
 ERROR!:Finish

Qty: ERROR!:Qty 	WEIGHT(kg) ERROR!:Weight	 SCALE: 1:10 Drawing Standard: AS1100	MATERIAL: ERROR!:Material
	CONFIDENTIAL © COPYRIGHT: Copyright in this drawing resides in BA Pumps & Sprayers. Unauthorised use may result in legal action. The subject of this drawing may be protected by pending patent and design applications or granted patent and design registrations. Unauthorised construction of the product may infringe copyright.		TITLE: Outer arm Full LH assm 1G
DRAWN: ERROR!:DrawnName DATE: ERROR!:DrawnDate		PROJECT: ERROR!:Project	REV: A SHEET 1 OF 1

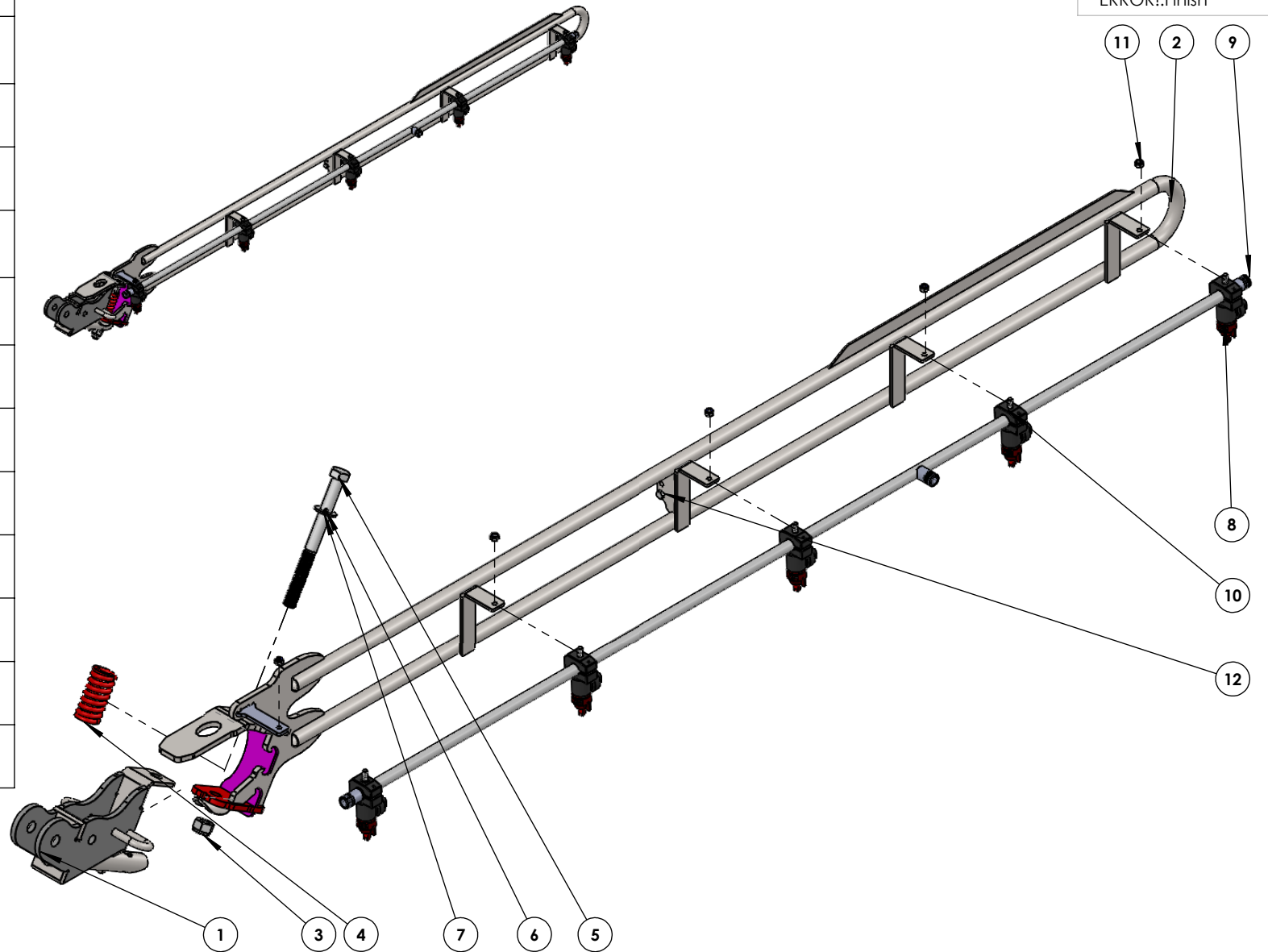
ITEM NO.	PART NUMBER	QTY.	ITEM NO.	PART NUMBER	QTY.
1	97123-03 G2 Inner arm assm	1	16	2175-BOLT M12X90 ZP HT BN	1
2	97123-48-Boom tube support 1	2	17	2348-BOLT M16 X 45 ZP HT	1
3	97123-100-Arm boom tube assm	1	18	1973-NUT M16 (NHFSM16Z)	1
4	97123-96-Clevis link new	4	19	1113-NUT M6 NYLOC ZP	2
5	97072-09 STUD M16 X 131mm (EGALV)	1	20	4142 M12 NUT ZP	1
6	97123-59-Stud M20 x 140	1	21	QJ17560A-20mm-N NOZZLE BODY 20MM	5
7	97123-58-Stud M16 x 151	1			
8	1138-NYLOC M20 NUT ZP	2			
9	1160-NYLOC M16 NUT ZP	6			
10	97123-49-Boom tube support 2	1			
11	1728-BOLT ZP M6X65	2			
12	2214-BOLT M8X20 ZP HT	3			
13	1114-NUT M8 NYLOC ZP	3			
14	97123-57-Spacer bush 2	2			
15	97123-60-Stud 19.05 dia x M16 x 151	1			

SURFACE FINISH



Qty:	WEIGHT(kg)	28.79		SCALE: 1:10	MATERIAL: ERROR!Material
	TOLERANCE: LINEAR: +/- ANGULAR: +/- °			SolidWorks	TITLE: Inner arm Full RH assm
	DRAWN		Drawing Standard: AS1100	DWG NO.	
	CONFIDENTIAL © COPYRIGHT: Copyright in this drawing resides in BA Pumps & Sprayers. Unauthorised use may result in legal action. The subject of this drawing may be protected by pending patent and design applications or granted patent and design registrations. Unauthorised construction of the product may infringe copyright.				PROJECT:
					REV: A A4
					SHEET 1 OF 1

ITEM NO.	PART NUMBER	QTY.
1	97123-04-G2 Brake away assm	1
2	97123-06-G2 Outer arm RH assm	1
3	1138-NYLOC M20 NUT ZP	1
4	1609 Spring squashed to 90 long	1
5	97123-38-Brk away bolt	1
6	2581-WASHER M20 HEAVY GALV	1
7	3009-ROLL PIN M6 X 50 SS	1
8	QJ17560A-20mm-N NOZZLE BODY 20MM	5
9	97123-100-Arm boom tube assm	1
10	2214-BOLT M8X20 ZP HT	5
11	1114-NUT M8 NYLOC ZP	7
12	1090-BOLT M8X25 ZP HT	2



SURFACE FINISH
ERROR!:Finish

	WEIGHT(kg)	ERROR!:Weight		SCALE: 1:10	MATERIAL: ERROR!:Material
	Qty: ERROR!:Qty	ERROR!:Qty			TITLE: Outer arm Full RH assm 1
CONFIDENTIAL © COPYRIGHT: Copyright in this drawing resides in BA Pumps & Sprayers. Unauthorised use may result in legal action. The subject of this drawing may be protected by pending patent and design applications or granted patent and design registrations. Unauthorised construction of the product may infringe copyright.		DRAWN: ERROR!:DrawnDate	DATE: ERROR!:Date	DWG NO. ERROR!:Drawing Number	REV: A A4
PROJECT: ERROR!:Project					SHEET 1 OF 1