

QUIK SPRAY[®]

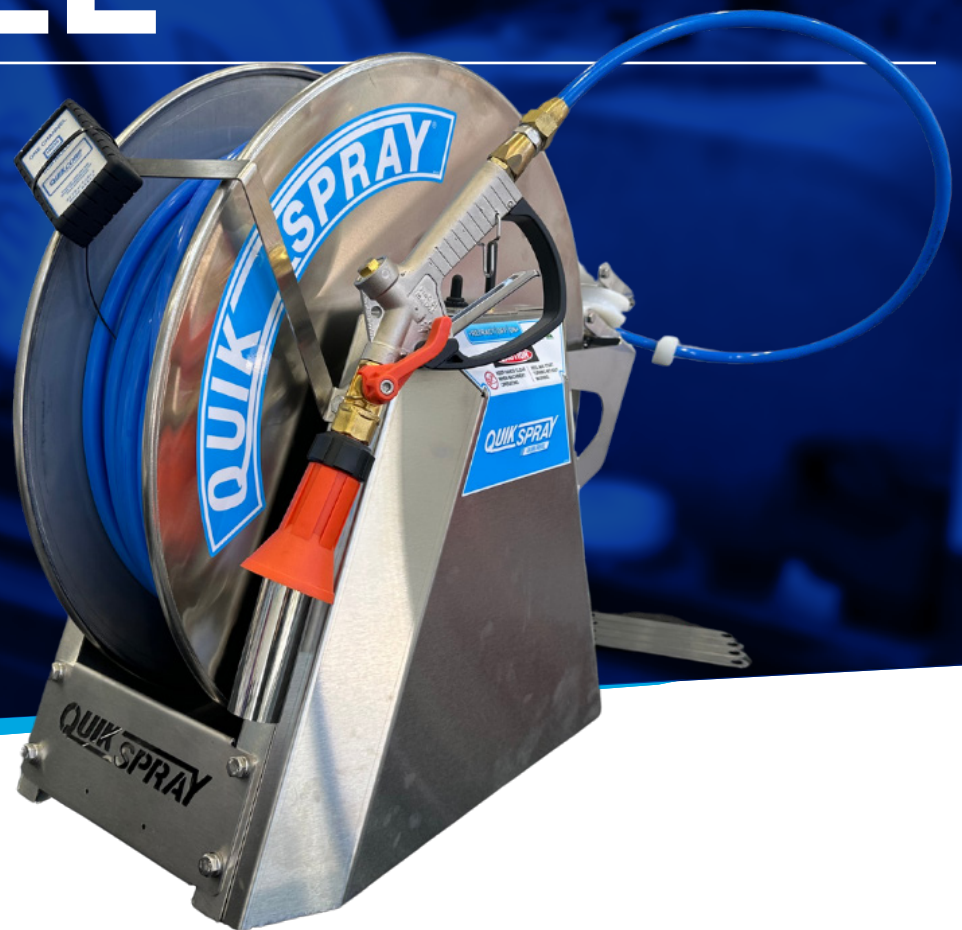
REMOTE CONTROL RETRACTABLE HOSE REEL SYSTEMS

QUALITY • PERFORMANCE • RELIABILITY • SERVICE

INSTRUCTION MANUAL

QUIK SPRAY 12 VOLT REEL

QR100



T 07 5493 8944
F 07 5493 8957

info@quikcorp.com.au
www.quikspray.com.au

15 Research Street
Coolum Beach QLD 4573



Proudly Australian Owned and Operated



T 07 5493 8944
F 07 5493 8957

info@quikcorp.com.au
www.quikspray.com.au

15 Research Street
Coolum Beach QLD 4573

KEY FEATURES



BERTOLINI PUMPS

We have over 20+ years of direct association and use of the highest quality Bertolini pumps. We have sourced only the best high quality parts to incorporate into our Quik Spray range.



POWERED BY HONDA

Every engine that sports the 'Green and Gold Approved' Honda symbol has been "matched" specifically to its product to make sure it's the right Honda engine for the job. With a Honda motor on board, you can be assured you have the most reliable motor to last a lifetime.

Honda is in partnership with Quik Spray and we use genuine parts only, which means you can rely on it working for a very long time.



REMOTE CONTROLLED TRANSMITTERS

The new high power remote control transmitter achieves the highest standard of performance. Operates over a range of up to 300 metres. 915 Mhz.



SUPA-SLIP HOSE

Quik Spray's own Supa-Slip® Hose is a high grade Nylon which is a polyamide bio plastic derived from vegetable oil which offers advanced performance and strength as opposed to the lower grade of Nylons commonly used.

The Quik Spray hose has higher operating pressures and tensile strength. It is also more resistant to cold and hot extremes. The additives in the hose mean it is less likely to kink or stretch giving it a longer life cycle.

WELCOME TO QUIK SPRAY

On behalf of the Quik Spray team, we would like to thank you for investing in a quality Quik Spray product. Our units are manufactured to the highest standard of quality, with every individual unit hand-assembled to guarantee our customers the best product and service possible. As an Australian owned business your investment has enabled our every success.

As a division of Quik Corp, our team have provided over three decades of high-quality agricultural products into the Australian market. From our humble beginnings in 1988, our product range has continually expanded and our innovation sparks from the passion and commitment we have for the agricultural industry.

Producing the world's first remote controlled retractable hose reel system in 1988, Quik Spray is the preferred choice of spray units for farmers, councils, contractors and nurseries.

With innovation, valuable expertise and the most dedicated service, we produce superior equipment suited to the harsh Australian environment. After 30 years, we know what it takes to make the most trusted sprayer on the market.

With over 30 years' experience we have a long and proud history of supporting regional and rural communities, providing real solutions to Australian farmers, contractors and council spray teams across the country.

All Quik Spray units are fabricated and hand-assembled right here in Warana, Queensland. We control all aspects of the fabrication and assembly process, ensuring you get the highest quality product. We are extremely proud and dedicated to providing jobs to local employees in the manufacturing sector.



TABLE OF CONTENTS

04	Unpacking Your Unit
05	Product Range Overview
07	Pre-operation Checklist
08	Operation Instructions
09	915 MHz Radio Receiver & Transmitter
10	Tuning 915 MHz Transmitter Receiver
11	Maintenance
12	Troubleshooting
13	Parts Diagrams – Wiring Schematic
14	Warranty Policy

MODEL QR100



WARNING

THIS UNIT IS DESIGNED TO REWIND THE HOSE AND SHOULD NOT BE USED TO SUPPORT THE WEIGHT OF THE OPERATOR OR PULL OTHER EQUIPMENT WHEN RETRACTING.

UNPACKING YOUR UNIT

When unpacking your new Quik Spray unit, please check it thoroughly for any transport damage that may have occurred during transit. Check that all parts and accessories that were ordered, have been included.

- Aerial/s
- Transmitter/s
- Instruction Manual/s (Honda, Bertolini, Quik Spray)
- All accessories as ordered

MOUNTING YOUR SPRAY UNIT

Mount the machine securely by bolting through all mounting lugs located at the on the base of the frame. Ensure a minimum of 50mm or 2 inches clearance from all sides to prevent damage.

- Connect the spray hand piece of your choice to the hose and adjust the nylon hose stopper approximately 1 meter or 3 feet from the end of the hand piece.

HARD WIRING TO VEHICLE BATTERY

Leads must be at least or 3/8" starter cable or larger and a "fusible link" (40 amp) must be connected in the main power lead at the battery end, to prevent fire in the case of an accidental short circuit. 2x Anderson plugs have been fitted to the unit for ease of connection. For best results use a fully charged heavy duty battery, 70AH or larger.



WARNING

Do not attach any positive earth machinery



WARNING

PLEASE FOLLOW ALL WARNINGS AS FAILURE TO DO SO MAY RESULT IN SERIOUS INJURY, PERMANENT INJURY OR DEATH

1. DO NOT start the unit until you have read this manual carefully.
2. DO NOT let any person near the unit while it is operating.
3. DO NOT pull the hose out too fast as the reel may run on, causing the hose to become entangled.
4. DO NOT alter the equipment in any manner. If repairs are necessary use only genuine factory repair parts.
5. DO NOT leave the unit running unattended at any time.
6. DO NOT operate the unit if there are any leaks from hoses, fittings, ECT. Fluids which are under high pressure can penetrate the skin.
7. DO NOT operate near power lines, as contact could result in electrocution.

FIT AERIALS TO MOUNTING BASES



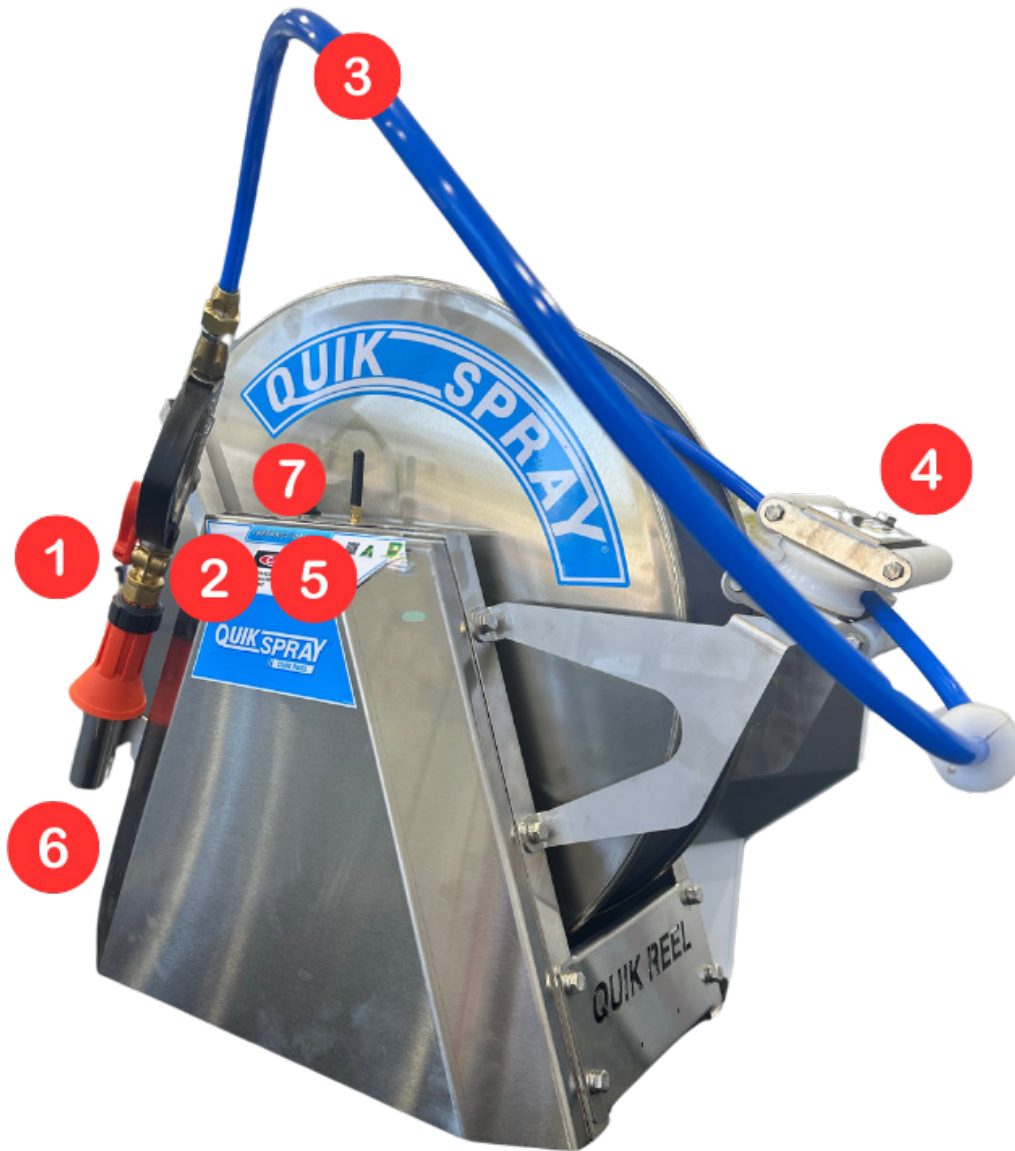
WARNING

DO NOT OVER-TIGHTEN THE AERIAL TO THE AERIAL BASE

Finger tighten and a tiny bit more, is all that the aerials require to be attached properly. Overtightening the aerials can cause the coax cable to break in the solder cap of the aerial base severing the connection to the aerial. This can result in a radio range of only 20-40 meters rendering the aerial/s incapable of receiving a signal.

PRODUCT RANGE OVERVIEW

STAND ALONE REEL QR100

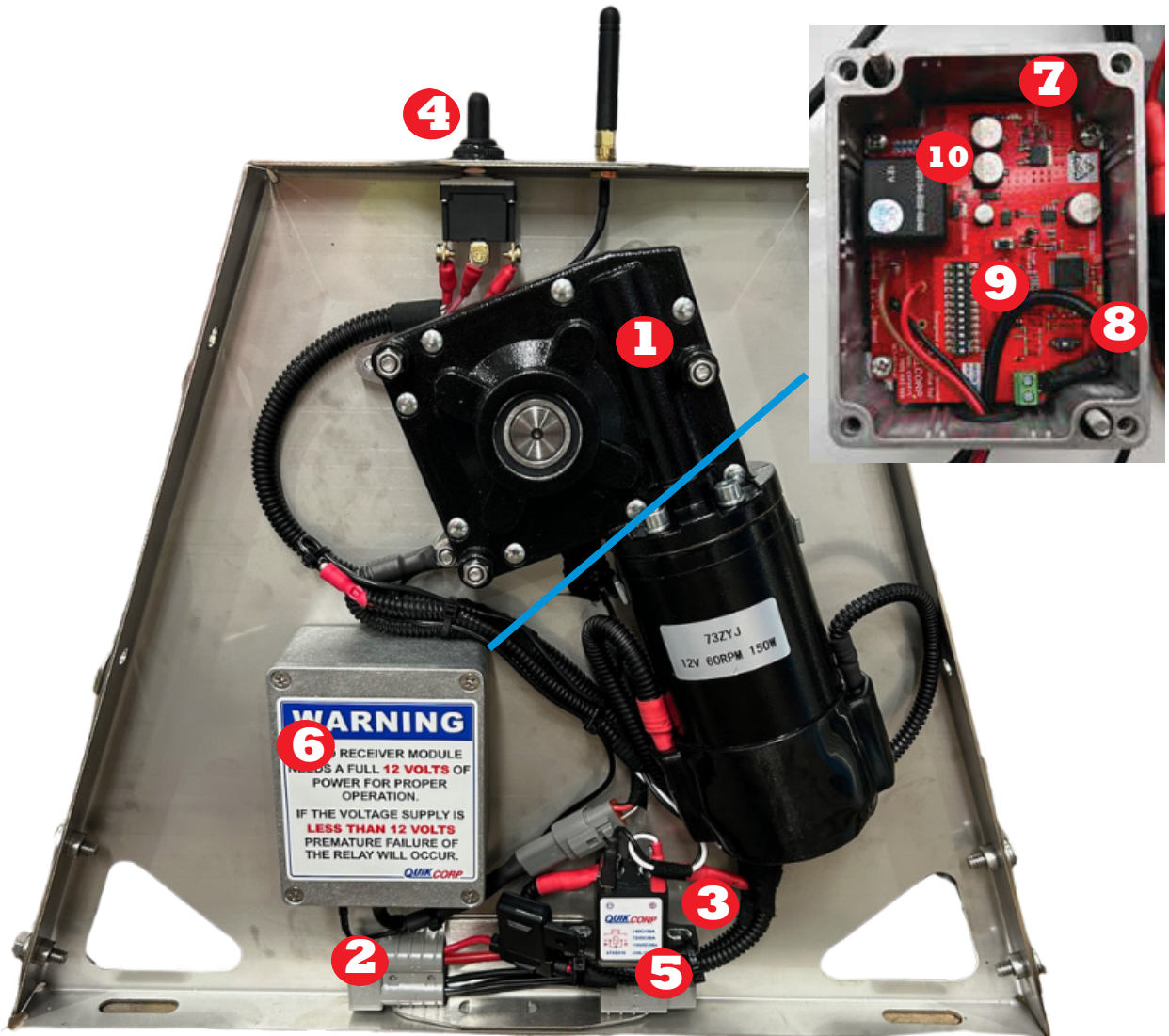


QR100 Reel Description

1. T-400 spray gun (additional accessory)
2. 915 MHz antenna aerial
3. 3/8" ID Supa-Slip® hose (50 or 100m options)
4. Hose roller head guide
5. Aerial base
6. Nozzle holder
7. ON/OFF power switch for radio receiver and manual operation

STAND ALONE REEL

QR100

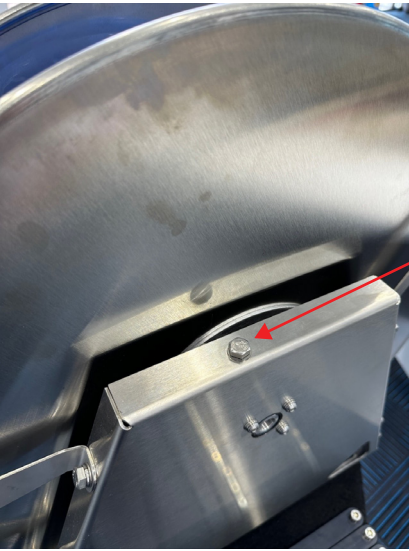


QR100 Reel Interior Description

- | | |
|--|---|
| <ol style="list-style-type: none"> 1. 12V Motor 2. 1x Anderson plug 50amp power in 3. Resettable circuit breaker 40amp 4. Operation switch momentary on/off 5. Feedback suppression diode 6. 915MHz radio receiver | <ol style="list-style-type: none"> 7. Main receiver board power light 8. 915MHz receiver board function power light 9. Radio receiver dip-switch code (This must match the radio transmitter) 10. Full integrated 915 MHz receiver board with relay and pre-regulator board |
|--|---|

PRE-OPERATION CHECKLIST

1. Prior to operating your spray system, please read the following instructions carefully.
2. Check all spray guns are connected and water tight.
3. Ensure all safety guards and shields are in place.
4. Ensure all nuts, bolts, and screws are in place and tight.
5. Ensure the radio on/off switch in the off position.
6. All maintenance schedules have been complete.



Reel drag adjustment bolt. Turn bolt clockwise for more drag when pulling the hose out in steep country. Turn bolt anti clockwise for less drag when pulling the hose out in flat ground. There should be some drag set in any conditions to prevent the hose from continuing to spool out onto the ground when you have stopped pulling the hose out.

TIPS & HINTS

Turn the radio switch off and disconnect from the battery when not in use.

- If the hose becomes entangled or caught, release the retraction button immediately or damage to the motor could result.
- Keep the unit under cover when not in use.
- A low power or voltage battery will cause weak or intermittent operation of the units motor. This can cause damage to the radio relay.
- Always insure that the 9 Volt battery in the transmitter is replaced every 3 months and that the 12 Volt power supply is charged on a regular basis and putting out optimal Voltage.
- When you write or call about any problem, you must have this information available:
 1. Model and serial number
 2. Where it was purchased from
 3. Date of purchase
 4. Your name, address, and telephone number
 5. A detailed description of the problem

OPERATION INSTRUCTIONS

USING THE TRANSMITTER TO RETRACT HOSE

Ensure all set-up instructions are complete.

When you are ready to operate the reel, turn the radio switch ON and carry the transmitter with the operator.

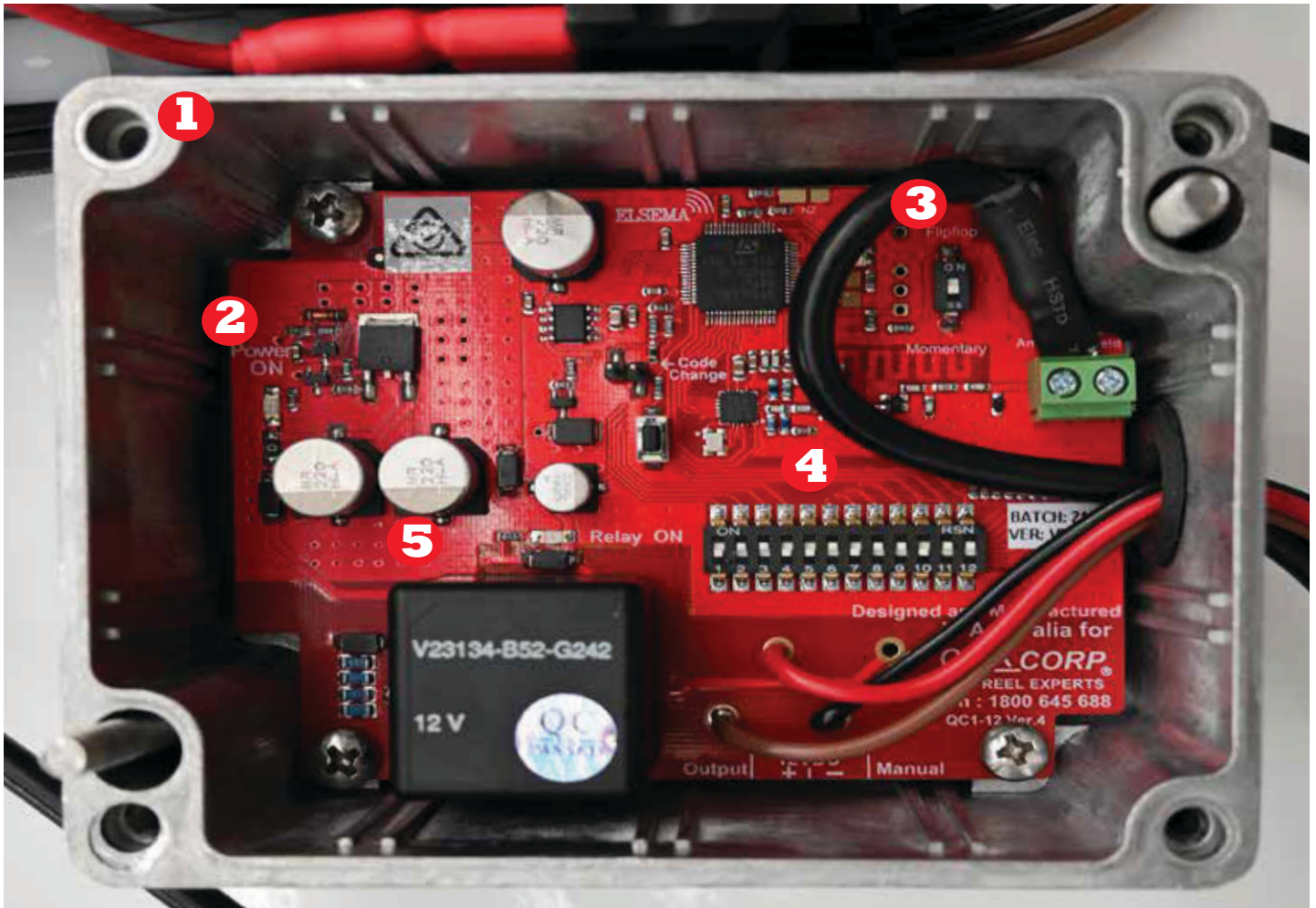
The reel will free-wheel out to the desired distance.

USING THE MANUAL BUTTON TO RETRACT HOSE

For manual retraction of the reel, use the manual switch.

This unit has been designed to operate in a continuous start/stop mode without damage to the unit. Keep tension on the hose when rewinding to enable the hose to slip into the low spot on the reel drum.

915 MHz RADIO RECEIVER & TRANSMITTER



QR100 Reel Interior Description

1. 915MHz radio receiver
2. Main receiver board power light
3. 915MHz receiver board function power light
4. Radio receiver dip-switch code (This must match the radio transmitter)
5. Full integrated 915 MHz receiver board with relay and pre-regulator board

TUNING 915 MHZ TRANSMITTER TO RECEIVER

Your 12 volt reel is delivered pre tuned from the factory. If at some point you need a new radio transmitter or receiver board you will need to follow these instructions to re-tune your system:

Please refer to Pg. ___ of this manual. (915 MHz radio receiver module and radio transmitter).

1. In the labelled photo description, there is a set of two dip-switch codes (blue panel with small white switches). There is one set on the receiver and one set on the transmitter. These codes can be moved to either the UP or DOWN position.
2. Make sure that both the radio receiver dip-switch code and the radio transmitter dip-switch codes match exactly to each other. This will enable the remote control to communicate with the receiver box, controlling the retraction of your reel.
3. When changing the 9 Volt battery in your radio transmitter make sure not to bump any of the dip-switch codes. This would render your remote control feature unusable until the dip-switch code was put back into its original position.
4. If two or more 915 MHz systems are in use in the near vicinity make sure that the dip-switch codes from one system to the other are different. If they are too close in dip-switch combination radio interference or cancellation can occur from one unit to another.



CAUTION

The working range of Quik Corp Radio transmitters can be affected by the many factors that typically affect all 915 MHz radio Transmissions. These include operating in the vicinity of high tension power lines, buildings and other obstructions. Interference can also come from other radio transmitters, and certain atmospheric conditions.

A range of 250 meters or more can be achieved under ideal conditions.

MAINTENANCE

DAILY

1. Check the battery condition, water level and voltage (12 volt).
2. Make sure all safety guards and decals are in place.
3. Inspect all nuts and bolts for missing or loose items.
4. Check all hoses and hose fittings for damage or leaks.
5. Insure the aerial is a little more than finger tight to the aerial base DO NOT OVER TIGHTEN

20 HOURS

1. Grease the reel swivel if needed. Do not over grease as as damage will occur to the swivel.

YEARLY

1. Replace the 9 volt transmitter battery.
2. Grease all bearings if needed and do not over grease. The motor brushes must be checked by an auto electrician.

TROUBLE SHOOTING

PROBLEM	PROBABLE CAUSE	REMEDY
Reel does not retract and manual button does not work	ON/OFF switch not ON or faulty	Switch ON or replace switch
	Discharged 12 volt battery	Recharge battery
	Loose connection on 12 volt battery	Fix loose connection
	Circuit breaker tripped	Reset circuit breaker
Reel does not retract and manual button works	Discharged 9 volt transmitter battery	Replace 9 volt battery
	Faulty radio receiver board, pre-regulator board or transmitter	Return radio receiver to Quik Spray with transmitter for testing and repair
	Dip-switch (915 MHz) not synchronised	Rematch dip-switch codes (915 MHz)
Reel only retracts at close distance	Discharged 9 volt battery transmitter battery	Replace 9 volt battery
	Aerial broken or loose on base	Tighten or replace
	Coax cable broken inside the aerial base	Repair or replace coax cable and aerial base
	Discharged 12 volt battery	Recharge or replace
	Faulty receiver board or transmitter	Return radio receiver to factory with transmitter for testing and repair. (CALL FIRST FOR PROCEDURE)
	Aerial braid not connected to negative supply	Reconnect

WARRANTY POLICY contd.

This document sets out the warranties that are given by Quik Corp Pty Ltd (ABN 18 081 235 556) in relation to the Product purchased from or manufactured by Quik Corp.

1. Definitions

1.1. In this warranty policy: "Quik Corp" means Quik Corp Pty Ltd (ABN 18 081 235 556); "Customer" means the party who originally acquired the Product from Quik Corp, or an authorised distributor, reseller or dealer for Quik Corp, for their own use.

"OEM Equipment" means the items of equipment fitted to the product by Quik Corp and which items have been manufactured by others and have their own manufacturer's warranty.

"Product" means the goods or machinery that the Customer acquired, and which were manufactured by Quik Corp.

2. Warranty

2.1. Subject to clause 3 and clause 4, Quik Corp warrants to the Customer that the Product will be free from proven defects in material and workmanship for twelve months from the date of purchase by the Customer, unless a specific warranty period applies to a component listed in appendix A.

2.2. The warranty is not transferable.

3. Limitations

3.1. This warranty does not cover damages resulting from shipping and handling, abuse, accidents, alterations, normal wear or failure to maintain or use the Quik Corp product with due care.

3.2. Quik Corp does not warrant that the operation of the product will be uninterrupted or error free. The Customer must read and follow all instructions and manuals for the setup, maintenance and use of the Product. If the Customer fails to do so, the product may not function correctly and may suffer other damage.

3.3. This warranty does not extend to OEM equipment which has its own warrant, and the Customer must rely on the OEM equipment warranty for any defects in material or workmanship relating to the OEM equipment.

3.4. This warranty does not extend to cover corrosion due to any cause nor to any damage to painted or anodised surfaces that occurs after the Customer takes delivery of the product.

3.5. This warranty does not cover time required to diagnose a warranty problem, this includes delays from the customer to respond to communication or sending required machines or parts for evaluation.

3.6. The use of parts other than Quik Corp parts for repair of warranted items will automatically negate any warranty. Warranted components must be replaced with genuine Quik Corp parts.

3.7. Repairs by an unauthorised agent will automatically forfeit any warranty. Warranty repairs must be carried out by Quik Corp or an authorised Quik Corp Dealer/Service Agent only.

3.8. This warranty does not cover any transportation or insurance costs involved in the warranty claim process.

3.9. The time taken to remove and re-install a warranted part or component into other brands of equipment will not be covered by the Quik Corp warranty. Only parts and labour directly attributable to the repair of the Quik Corp unit is covered.

3.10. Quik Corp does not pay for cleaning, or clean the Product, accessories or work area before or after the warranty repair.

3.11. Quik Corp assumes no responsibility for improper choice of models or where products are used in excess of rated capacities and design functions, or under abnormal conditions. We make available a free technical service to help with any product selection, application or situation.

4. Repair or Replace

4.1. During the warranty period, authorised Dealer/Service Agent shall repair or replace, at Quik Corp's discretion, without charge for parts and standard labour, any part of the Quik Corp Product which fails because of defects in material or workmanship unless the damage arises from:

4.1.1. Failure resulting from neglect or misuse, such as improper operation, lack of required maintenance or continued use of the Product after the discovery of a defect which results in greater damage to the Product.

4.1.2. Deteriorated or failed components such as but not limited to diaphragms, O-rings, hoses, seals, electrical wiring and connections damaged by corrosive chemicals, dirt and sand, excessive heat or moisture. The Customer should ensure the type and strength of chemicals used in the Product are compatible with the design of the Product.

4.1.3. The use of accessories, hardware, or software which were not manufactured by, installed by or approved in writing by Quik Corp.

4.1.4. The use of consumable items such as but not limited to oils, lubricants, diaphragms, O-rings, hoses seals, gaskets, filter elements, flow meters, clutches, drive belts, pivot pins, paint, batteries, radio transmitters, radio relays, push buttons, reel friction breaks, switches, hose rollers, aerials, spray guns and nozzles as these items are considered to be normal wear items and are not warranted.

4.1.5. Component failure caused by not performing scheduled maintenance service such as oils, grease, failure to clean tanks, pumps, filters, spray lines, nozzles or any other components and not tightening or replacing loose or missing bolts, nuts, fittings, shields and covers.

4.1.6. Damage or machine failure caused by carelessness or accidental damage, improper operation, inappropriate transportation or storage of the Product. Please refer to the machine's user manual for proper operation guidelines.

4.1.7. Any contamination or leakages caused or induced by the Customer.

4.1.8. Any use or operation of the Product outside the physical, electrical or environmental specifications of the Product.

4.1.9. Any alterations, modifications, attachments or unauthorised repairs to the Product which have not been authorised in writing by Quik Corp; and

4.1.10. Failures due to faulty or inadequate electrical sources of power.

4.1.11. Damage caused by remaining water or liquid products left on any parts of the machine under freezing temperatures. This includes but it is not limited to,

WARRANTY POLICY contd.

filters, pumps, tanks and hoses.

5. OEM Warranties

5.1. All OEM (Original Equipment Manufacturer) components are covered by the Original Manufacturer's Warranty. It is the Customer's responsibility to familiarise themselves with these warranties, and subject to clause 7, that is the only warranty given to the customer in respect of that part of the Product.

6. Statutory Rights and Exclusions (New Zealand Only)

6.1. If the Product has been acquired for the purposes of a business, then pursuant to section 43(2) of the Consumer Guarantees Act 1993 ("CGA") it is agreed that the provisions of the CGA do not apply. To the fullest extent permitted by law in New Zealand, Quik Corp excludes any liability for any direct or indirect loss or damage of any kind arising from the Product, including consequential loss or damage or loss of profits, and loss or damage arising from the negligence of Quik Corp's employees and agents. The warranty is personal to the Customer and cannot be transferred to a subsequent purchaser (although the purchaser, in some circumstances, may have rights under the CGA or the Sale of Goods Act). These exclusions do not exclude Quik Corp's liability in respect of any warranties or guarantees implied by any relevant legislation in New Zealand which cannot legally be contracted out of.

Page 3

7. Warranty Claim Procedure

7.1. To obtain warranty service:

7.1.1. The Customer must read the Operating manual before operating the Product.

7.1.2. The Customer must provide Quik Corp with notice of the defect within the warranty period and within 14 days of discovering the claimed problem and allow reasonable time for replacement or repair. The warranty claim process may take between 2-4 weeks depending on the parts involved and may be longer if the OEM has a longer lead times.

7.2. Quik Corp may, at its discretion, request the Customer to deliver the alleged defective parts to an authorised servicing Dealer/Service Agent or to Quik Corp. Transportation of the Product to the authorised servicing Dealer/Service Agent or Quik Corp for warranty work is the responsibility of the Customer and is at the Customer's expense. Alternatively, the Customer may request a Quik Corp service technician to travel to the site of the Product to effect repairs or replacement, however the reasonable travel costs (including traveling time) of the service technician must be paid for by the Customer.

7.3. Any service outside the scope of this warranty will be charged for at Quik Corp's rates and terms then in effect.

8. Other

8.1. This warranty is in lieu of all other warranties (except those of title), expressed or implied, and there are no warranties of merchantability or fitness for a particular purpose.

8.2. Unless the Product has been purchased for personal, domestic or household use, any liability of Quik Corp to the Customer arising under statute which may not be excluded restricted or modified by agreement is limited to an amount equal to, as determined by Quik Corp:

8.2.1. Replacement of the Product or supply of equivalent Product.

8.2.2. The repair of the Product.

8.2.3. The payment of the cost of replacing or repairing the Product; or

8.2.4. Refund of the purchase price paid by the Customer.

8.3. Subject to clause 7.2, in no event shall Quik Corp or the authorised Dealer/Service Agent be liable for any loss of profit or any consequential, indirect or special loss, damage or injury of any kind whatsoever arising directly or indirectly from the Product or any defect.

8.4. The benefits under this Warranty are in addition to other rights and remedies under a law in relation to the Product.

8.5. The judgement of Quik Corp in all cases of claims under this warranty shall be final and conclusive and the Customer agrees to accept its decisions on all questions as to defect, repair and to the exchange of any part or parts.

Appendix A:

1. Bertolini Pumps – Warranty period is 6 months. If Quik Flush pump and tank cleaner is used from new then the warranty period is extended to 24 months.

2. Honda Motors – Refer to your Honda Manual. (Warranty period is up to 3 years)

3. Radio Receiver – Warranty period is 12 months on all models.

4. Structural integrity: Refer to the machine frame for 5 years. This does not include coating.

WARRANTY PROCESS

Please fill out form on our website at <https://quikspray.com.au/warranty-claim-submission/>

Before submitting a claim, please ensure the issue encountered is covered under our Warranty Policy, you can access this policy by clicking the link below.

To complete the following form, you will need the following details at hand:

- Machine model
- Date of Purchase (Date on your invoice)
- Machine Serial Number (This can be found on your machine as shown in this photo)



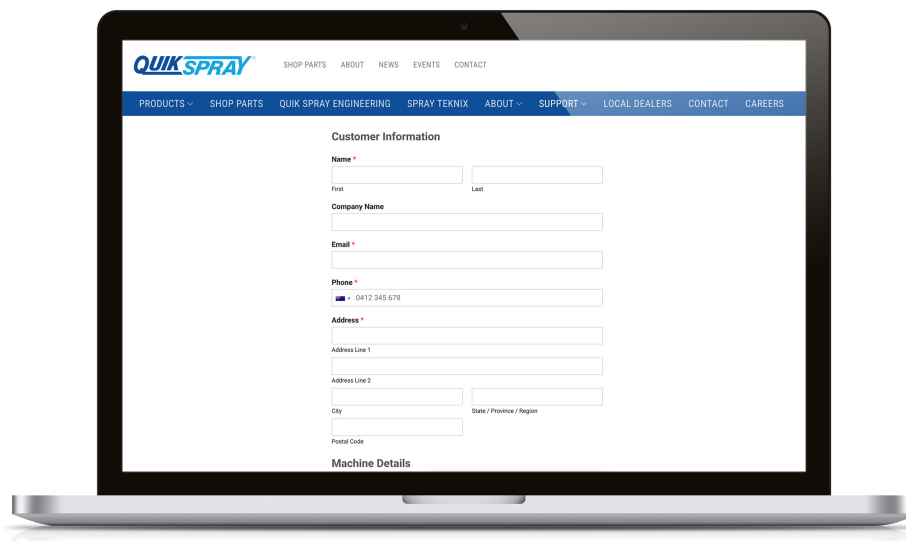
Please provide as much detail as possible to expedite the warranty claim process. attach any supporting documents, such as photos if available.

Instructions for Submission

1. Fill out form completely.
2. Attach a copy of the original purchase receipt.
3. Include any relevant photos of the fault.

***Photo uploads only, if you would like to send a video, please email to warranty@quikcorp.com.au**

4. Submit the completed form and supporting documents



Important: Warranty claims for Honda motors must be submitted directly through Honda using the QR code provided.

