

# BA CALVING & FEEDING EQUIPMENT

*For All Your Calf Rearing & Mobile Feeding Needs*





**BA PUMPS & SPRAYERS**



**TOKOROA ENGINEERING**

Since late 2024, BA Pumps & Sprayers are proud to manufacture and supply Tokoroa Engineering's trusted range of products. For years, Tokoroa Engineering has been synonymous with designing and producing durable, high-quality trailers and feeders, purpose-built for New Zealand's dairy farmers. Our renowned calf trailers, feed trailers and Milk Bar™ mobile calf feeders have become mainstream on farms nationwide, valued for their ability to perform in even the toughest conditions.

Whether you're in need of rugged trailers, robust feeders, or essential spare parts, our combined expertise ensures that we continue to deliver practical, efficient solutions to meet the needs of New Zealand farmers. Together, we are committed to supporting your success with reliable, locally made equipment designed to keep your farm running smoothly.

*Yours sincerely,*  
Mark, Penny, and Guy Rendle

At our modern manufacturing facility in Hautapu, Cambridge, we are dedicated to continuing Tokoroa Engineering's legacy of quality and reliability.



**TOKOROA ENGINEERING**



GET IN TOUCH FOR ALL YOUR MOBILE CALF REARING NEEDS  
0800 833 538 | [orders@bapsnz.com](mailto:orders@bapsnz.com)





## FEED TRAILERS

- Super heavy-duty plastic trough with bung.
- Troughs are not bolted to the frame to minimise the chance of damage from knocks and make cleaning easier.
- Fully hot-dipped galvanized frames.
- 8 inch tractor grip 6ply tyres for load carrying.



## CALF TRAILERS

- NZ Built - Tough and durable.
- Fully hot-dipped galvanized frame construction.
- Easy to clean - Hygienic mesh flooring, removable gates.



## BA PRO SPREADER

- Purpose-built for reliable and consistent application of Causmag across pasture during calving.
- Also suitable for seed, bait and fertiliser application.
- Innovative hopper and aperture design ensures smooth flow and even spread.
- Durable, low-maintenance build.



## CALFETERIAS

- NZ Built with UV-stabilised polyethylene tank.
- Easy to clean - Open trough design, no pipes or fiddly bits.
- Quick to fill - Large taps and 50L tank markings make filling accurate and fast. The opaque tank lets you quickly check the volume.
- Fitted with industry-leading Milk Bar™ Teats that mimic natural suckling to support digestion, reduce cross-suckling, and improve calf health.



# 4M/6M CALF FEEDER

**FEATURES:**

- 8 inch tractor grip 6ply tyres.
- Troughs deliberately not bolted to frame so knocks don't result in troughs being torn away.
- Super heavy-duty plastic trough with bung for easy drainage and cleaning.
- "Oily bush" steering pivot system requires no lubrication, reducing maintenance.
- Twin front wheels for improved load distribution and maneuverability.
- Hot-dipped galvanized frame for superior durability and rust resistance.
- Parking brake can be engaged when drawbar is raised vertically, out of harms way.



	4M CALF FEEDER	6M CALF FEEDER
<b>PRODUCT CODE</b>	ME-FDC4	ME-FDC6
<b>TARE WEIGHT</b>	200kg	300kg
<b>GROSS WEIGHT</b>	675kg (Palm kernel loaded)	1000kg (Palm kernel loaded)
<b>HEIGHT</b>	670mm	670mm
<b>CAPACITY</b>	675L	1000L
<b>TROUGH WIDTH</b>	800mm	800mm

**GET IN TOUCH FOR ALL YOUR MOBILE CALF REARING NEEDS.**

**CALL OR EMAIL OUR TEAM:**

**P: 0800 833 538 E: [orders@bapsnz.com](mailto:orders@bapsnz.com)  
[tokoroaengineering.co.nz](http://tokoroaengineering.co.nz)**



# 4M/6M PREMIUM FEEDER

**FEATURES:**

- 8 inch tractor grip 6ply tyres.
- Fully hot-dipped galvanized frame provides excellent durability and longevity in tough, corrosive conditions.
- Super heavy-duty plastic trough with bung for easy drainage and cleaning.
- Troughs deliberately not bolted to frame so knocks don't result in troughs being torn away, and for ease of cleaning.
- Twin front wheels distribute the load evenly, improving traction and making tight turns easier.
- The "oily bush" pivot system offers smooth, reliable steering with minimal upkeep.
- Parking brake system automatically engages when the drawbar is raised.
- Walking beam tandem rear axle for load capacity and smooth travel (6M version only).



	4M PREMIUM FEEDER	6M PREMIUM FEEDER
<b>PRODUCT CODE</b>	ME-FDP4	ME-FDP6
<b>TARE WEIGHT</b>	250kg	440kg
<b>GROSS WEIGHT</b>	1250kg (Palm kernel loaded)	2000kg (Palm kernel loaded)
<b>HEIGHT</b>	800mm	800mm
<b>CAPACITY</b>	1570L	2400L
<b>TROUGH WIDTH</b>	1 Metre	1 Metre

# QUICK HITCH 6M FEEDER

**FEATURES:**



- Gross Weight: 2000kg (Palm Kernel loaded).
- Capacity: 2400L.
- Frame height: 750mm.
- 12 inch tractor grip 6ply tyres.
- Fully hot dipped galvanized frame.
- Troughs deliberately not bolted to frame so knocks don't result in troughs being torn away, and for ease of cleaning.
- Super heavy-duty plastic trough with bung.
- Built with a 50mm towing eye.
- Feeds approximately 300 cows.

PRODUCT CODE	DESCRIPTION	L X W X H	WEIGHT
ME-FDQH	Quick Hitch Meal Feeder	7m x 1.2m x 0.75m	300kg

# DRAWBAR 4M FEEDER

**FEATURES:**

- Tare Weight: 150kg.
- Gross Weight: 625kg (Palm Kernel loaded).
- Trough Width: 800mm.
- Capacity: 675L.
- Frame height: 610mm.
- 8 inch tractor grip 6ply tyres.
- Fully hot-dipped galvanized frame.
- Troughs deliberately not bolted to frame so knocks don't result in troughs being torn away, and for ease of cleaning.
- Super heavy-duty plastic trough with bung.
- Suitable for younger stock.



PRODUCT CODE	DESCRIPTION	L X W X H	WEIGHT
ME-FDDB	Drawbar 4M Feeder	4m x 0.8m x 0.61m	150kg

# 15 CALF TRAILER

## FEATURES:

- Tare Weight 150kg.
- Size: 1900 x 1500mm (2.85sq metres).
- Deck Height: 560mm.
- 1 pen/1 door.
- Ideal for smaller calf groups.
- Easy loading and unloading.
- Equipped with a mesh floor that promotes excellent hygiene and simplifies cleaning.
- Built with a fully hot-dipped galvanized frame for long-term durability and rust resistance.

# 20/40 CALF TRAILER

## FEATURES:

- 2 pens/4 doors.
- Transports up to 20/40 calves safely.
- Easy loading and unloading.
- Removable gates provide flexibility for different transport needs.
- Hot-dipped galvanized frame with 40mm pivot shafts in grease-less plastic bushes.
- Hygienic mesh flooring minimizes infection risks and ensures easy cleaning.
- Tandem walking beam axle for load carrying and a smooth ride.



**15-CALF TRAILER**



**20-CALF TRAILER**



**40-CALF TRAILER**

PRODUCT CODE	ME-CT15	ME-CT20	ME-CT40
TARE WEIGHT	150kg	270kg	450kg
L x W x H	2.7m x 1.5m x 1.5m	2.4m x 1.7m x 1.5m	3.5m x 1.65m x 1.5m
DECK AREA	2.85 m <sup>2</sup>	4.20 m <sup>2</sup>	8.14 m <sup>2</sup>
DECK HEIGHT	560mm	580mm	600mm



# MILK BAR™ CLASSIC RANGE

## FEATURES:

- A 40, 50 or 60-teat feeder with a 500L molded tank.
- Single-axle design for easy transport across the farm.
- Durable and reliable - NZ Built with UV-stabilised polyethylene tanks and manifolds and hot-dipped galvanized frames.
- Front to back levelling system.
- Easy to clean - Open trough design, no pipes or fiddly bits. Teats are pulled through, so they won't move, and the whole unit completely drains.
- Quick to fill - Large taps and 50L tank markings make filling accurate and fast. The opaque tank lets you quickly check the volume.
- Fitted with industry-leading Milk Bar™ Teats that mimic natural suckling to support digestion, reduce cross-suckling, and improve calf health.



MB50SC

PRODUCT CODE	TEAT COUNT	AXLE TYPE	TANK SIZE	L X W X H	TEAT SPACING	WEIGHT	DRAWBAR LENGTH
MB40SC	40	Single Axle	500L	2.2m x 1.75m x 1.45M	140mm	145kg	1.55m
MB50SC	50	Single Axle	500L	2.2m x 1.75m x 1.45M	110mm	145kg	1.55m
MB60SC	60	Single Axle	500L	2.8m x 2m x 1.45M	110mm	157kg	1.25m

# MILK BAR™ DELUXE RANGE

*Ideal for larger operations or where distance is travelled*

## FEATURES:

- 40, 50 or 60 mobile teat feeder.
- 500L or 750L tank.
- Tandem axle design for enhanced stability and smooth towing.
- Front to back and sideways levelling gives all calves their share of milk.
- Two drain taps for quick and efficient cleaning.
- Round tank eliminates milk surge, improving stability and flow.
- Drawbar handle, guard and jockey wheel.
- Durable and reliable - NZ Built with UV-stabilised polyethylene tanks and manifolds and hot-dipped galvanized frames.
- Easy to clean - Open trough design, no pipes or fiddly bits. Teats are pulled through, so they won't move, and the whole unit completely drains.
- Quick to fill - Large taps and 50L tank markings make filling accurate and fast. The opaque tank lets you quickly check the volume.
- Fitted with industry-leading Milk Bar™ Teats that mimic natural suckling to support digestion, reduce cross-suckling, and improve calf health.



MB50T750D

Our Deluxe Tandem range feature walking beams mounted to a sprung axle for stability when driving over bumpy terrain.

PRODUCT CODE	TEAT COUNT	AXLE TYPE	TANK SIZE	L X W X H	TEAT SPACING	WEIGHT	DRAWBAR LENGTH
MB40SD	40	Single Axle	500L	2.2m x 1.75m x 1.45m	140mm	145kg	1.55m
MB40TD	40	Tandem Axle	500L	2.2m x 1.75m x 1.45m	140mm	-	1.55m
MB40T750D	40	Tandem Axle	750L	2.8m x 2m x 1.65m	140mm	-	1.55m
MB50SD	50	Single Axle	500L	2.2m x 1.75m x 1.45m	110mm	145kg	1.55m
MB50TD	50	Tandem Axle	500L	2.2m x 1.75m x 1.45m	110mm	-	1.55m
MB50T750D	50	Tandem Axle	750L	2.8m x 2m x 1.65m	110mm	-	1.55m
MB60SD	60	Single Axle	500L	2.8m x 2m x 1.45m	110mm	157kg	1.25m
MB60TD	60	Tandem Axle	500L	2.8m x 2m x 1.45m	110mm	-	1.25m
MB60T750D	60	Tandem Axle	750L	2.8m x 2m x 1.65m	110mm	-	1.25m



# MILK BAR™ MOBILE FEEDER 100

*The ultimate in Mobile Calf Feeders*

## FEATURES:

- Large numbers of calves requires extra functionality and the Milk Bar™ 100 Teat Mobile Feeder is made for the job.
- Limitless steering axle and extra long drawbar.
- High spec 75 x 50mm box section steel chassis with suspension for an improved ride.
- Tandem axles at the rear for load carrying.
- Front to back as well as sideways levelling gives all calves their share of milk.
- Two tanks, each holding 550L with marked gradients and connected with 50mm taps & plumbing.
- Fitted with industry-leading Milk Bar™ Teats that mimic natural suckling to support digestion, reduce cross-suckling, and improve calf health.





Control taps to fill manifolds from either tank.



Front to back and sideways levelling system.



Easy-to-clean open trough design.



High load carrying in tandem axle design.



Pull wires used to compress springs to achieve sideways levelling.

PRODUCT CODE	TEAT COUNT	VOLUME	MANIFOLD VOLUME	FRONT AXLE TRACK	REAR AXLE TRACK	L X W X H	WEIGHT
MB100	100	1100L	500L	1.18m	1.58m	7.1m x 1.8m x 1.2m	340kg

## MILK KART 550L DELUXE

FEATURES:

- A 550L mobile Milk Kart with a 12V pump and a 10m hose & nozzle.
- Durable and reliable - NZ Built.
- 45cm diameter lid.
- Galvanised trailer.
- Drain tap for cleaning.
- 550L tank with marked gradient.
- Large carry tray.



CODE: MBMK550D (12V PUMP)  
OR MBMK550C (NO PUMP)

PRODUCT CODE	DESCRIPTION	L X W X H	WEIGHT
MBMK550D	Milk Kart Deluxe	3.2m x 1.1m x 1.5m	175kg

## MILK MIXER TRAILER 550L

FEATURES:

- 550L tank with marked gradient.
- 45cm diameter lid.
- Galvanised trailer.
- Drain tap for cleaning.
- Large carry tray.
- Circulating system to mix milk powder.
- 2" electric start petrol pump with a 10m hose and nozzle.



PRODUCT CODE	DESCRIPTION	L X W X H	WEIGHT
MBMIX550	Milk Mixer Trailer 550L	3.2m x 1.1m x 1.5m	220kg

## MEAL SAVER

FEATURES:

- Holds 150kg.
- Opening height: 550mm. Total height: 720mm.
- Designed to keep meal dry and edible, ensuring minimal loss.
- Completely wind, rain, and pest proof.
- Counter balance lids that calves can easily lift with their noses.
- Fitted with skids.



CODE: MBMS

PRODUCT CODE	DESCRIPTION	L X W X H	WEIGHT
MBMS	Meal Saver	1.42m x 1.02m x 0.72m	23kg



# BA PRO-SPREADERS

## BA PRO-SPREAD TRAILED CAUSMAG SPREADER

Specifically designed for the application of Causmag, the BAF70 and BAF140 feature an innovative hopper and aperture design that also allows for effective spreading of products like urea and grass seed. Their compact build and low spinner height ensure reliable coverage across a range of conditions.

### FEATURES:

- Galvanised frame and spinner disc for enhanced durability
- Polyethylene hopper and lid – lightweight and corrosion-resistant
- Spreader deflector shield helps prevent product build-up
- Grease-filled gearbox for smooth, low-maintenance operation



**BAF70**

## BA PRO-SPREAD TRAILED FERTILISER SPREADER

### BAF225 & BAF425 Fertiliser Spreaders

Compact and efficient, the BAF225 and BAF425 are purpose-built for fertiliser application. A low spinner height and dual outlet hopper ensure even distribution, while curved spinner fins deliver consistent spread patterns. Ideal for farmers and lifestyle block owners alike. Also suitable for Causmag application on larger farms.

### FEATURES:

- Galvanised frame for maximum corrosion resistance
- Stainless steel spinner disc with adjustable fins
- Polyethylene hopper and lid
- Spreader deflector shield to reduce build-up and improve accuracy
- Clutch with single-lever control for aperture opening and drive engagement.
- Grease-filled gearbox for smooth, low-maintenance performance



**BAF225-C**



**BAF70**



**BAF140**



**BAF225-C**



**BAF425-C**

PRODUCT CODE	TANK SIZE	DRY WEIGHT	DIMENSIONS (mm)	THROW WIDTH
<b>BAF70</b>	70L	2 x 25KG bags of causmag 1 x 40kg bag of urea	Wheelbase: 1260 Lid fitted height: 1100 Hopper height: 1100	Causmag at 15KPH - 2-2.25
<b>BAF140</b>	140L	4 x 25KG bags of causmag 2 x 40kg bags of urea	Wheelbase: 1260	Causmag at 15KPH - 2-2.25
<b>BAF225-C</b>	425L	9 x 40KG bags of urea	Wheelbase: 1640 Lid fitted height: 1408 Hopper height: 1300	Urea at 15KPH - 15
<b>BAF425-C</b>	425L	9 x 40KG bags of urea	Wheelbase: 1640 Lid fitted height: 1408 Hopper height: 1300	Urea at 15KPH - 15

## SPARE PARTS CALF TRAILERS & FEEDERS

	<p><b>ME-B-B</b> Brake Bar</p> 	
<p><b>ME-AX-4</b> 4mtr Rear Stub Axle 40x275mm</p> 	<p><b>4536 LOCK NUT</b> For Walking Beam / Steering Head</p> 	
<p><b>ME-AX-CT</b> Steering Head &amp; Calf Trailer Axle 40x270mm</p> 	<p><b>4537 HEAVY WASHER</b> For Walking Beam / Steering Head</p> 	
<p><b>1507</b> Walking Beam Stub Axle 32x225mm</p> 	<p><b>ME-WH-TGL / ME-WH-TGR</b> Wheel Tractor Grip Passenger Side (L) or Driver Side (R)</p> 	
<p><b>ME-AX-DE</b> Double Ended Steering Head Axle 32x410mm</p> 	<p><b>ME-WH-TURF</b> Wheel Turf</p> 	
<p><b>ME-WASH-Y</b> Steering Head Washer Upper 40ID</p> 	<p><b>ME-WASH</b> Steering Head Washer Lower</p> 	
<p><b>ME-BUSH50</b> Walking Beam Bush 50mm long, 50 OD, 40 ID</p> 	<p><b>ME-RIMP</b> Rim Painted</p> 	
<p><b>ME-BUSH75</b> Steering Head &amp; Calf Trailer Walking Beam Bush. 75mm long</p> 	<p><b>ME-WH-BK</b> Wheel Bearing Kit</p> 	
<p><b>ME-WB-6</b> Walking Beam 6mtr feeder 640mm</p> 	<p><b>ME-TR6</b> Trough replacement 6mtr</p> 	
<p><b>ME-WB-CT40</b> Walking Beam Calf Trailer 700mm long with boss</p> 	<p><b>ME-TR-4</b> Trough replacement 4mtr</p> 	
<p><b>ME-WB-CT20</b> Walking Beam Calf Trailer &amp; Milk Bar™ Deluxe 640mm long with boss</p> 	<p><b>ME-TR-4C</b> Trough replacement 4mtr Calf Feeder</p> 	
<p><b>ME-DB-O</b> Draw Bar Only</p> 	<p><b>ME-TR-6C</b> Trough replacement 6mtr Calf Feeder</p> 	
<p><b>ME-DB-C</b> Complete Draw Bar</p> 	<p><b>ME-RIMG</b> Rim Galvanised</p> 	
<p><b>MB-FD-TH-KIT</b> Rear Hitch Kit for Premium/Calf Feeders</p> 	<p><b>P10004-20</b> Steering Head Complete</p> 	

GET IN TOUCH FOR ALL YOUR MOBILE  
CALF REARING NEEDS.

CALL OR EMAIL OUR TEAM:  
P: 0800 833 538 E: orders@bapsnz.com

# SPARE PARTS MILK BAR™ CALFETERIAS



## MB-MAN-8

Manifold 8 teat for MB100 & MB80



## MB-LJ

Levelling Jack for levelling tank



## MB-MAN-18D / MB-MAN-18P

Manifold 18 teat for MB80 Driver Side (D) or Passenger Side (P)



## MB-JW

Jockey Wheel Complete



## MB-MAN-23D / MB-MAN-23P

Manifold 23 teat for MB100 Driver Side (D) or Passenger Side (P)



## MB-JW-WH

Jockey Wheel Only



## MB-MAN-25

Manifold 25 teat for MB50



## MB-IP

Inspection Port



## MB-MAN-30

Manifold 30 teat for MB60



## MB-BU32

Bung for MB50 & MB60



## MB-TNK-500

500 Litre Tank



## MB-BU391

Bung for MB80 & MB100



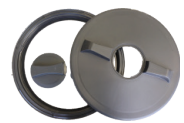
## MB-TNK-550

550 Litre Tank



## MB-SL

Screw Lid



## MB-TNK-750

750 Litre Tank



## MB-FOL

Fold Over Lid



## MB-TS-500

Tank Sticker 500 Litre



## MB-BC

Breather Cap



## MB-TS-750

Tank Sticker 750 Litre



## MB-SH

Suitcase Handle



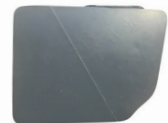
## MB-SP3 and MB-SP4

Spring 3Leaf and 4Leaf



## MB-MF

Mud Flap



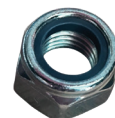
## MB-DB-EX

Milk Bar™ Mobile Drawbar Extension



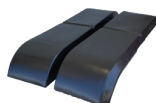
## 1138

Axle Nut



## 3034

Tandem Mud Guard



## 1131

Axle Washer



## PROUDLY NZ MADE FOR OVER 35 YEARS

At BA Pumps and Sprayers, we like to keep things simple. Our business approach combines good old-fashioned Kiwi ingenuity with the world's best components, backed by nationwide support and service. As specialist suppliers and manufacturers of pumps, sprayers, spreaders and more, our capabilities ensure you have everything you need for farming.



GET IN TOUCH FOR ALL YOUR CALVING AND FEEDING FARM EQUIPMENT.

CALL OR EMAIL OUR TEAM

Phone: 0800 833 538

Email: [orders@bapsnz.com](mailto:orders@bapsnz.com)

[www.tokoroaengineering.co.nz](http://www.tokoroaengineering.co.nz)

